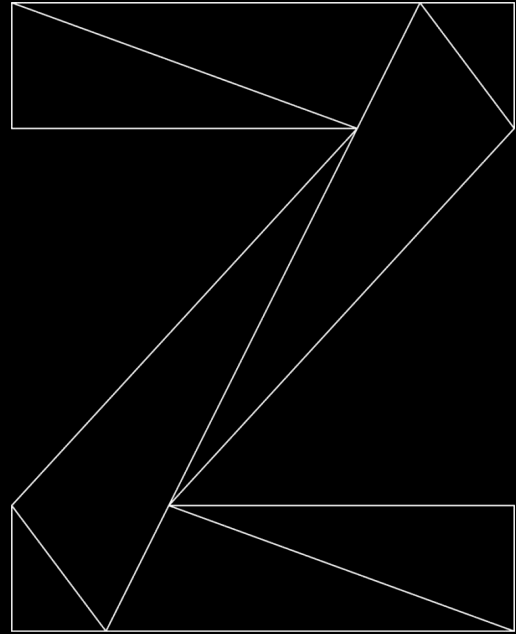


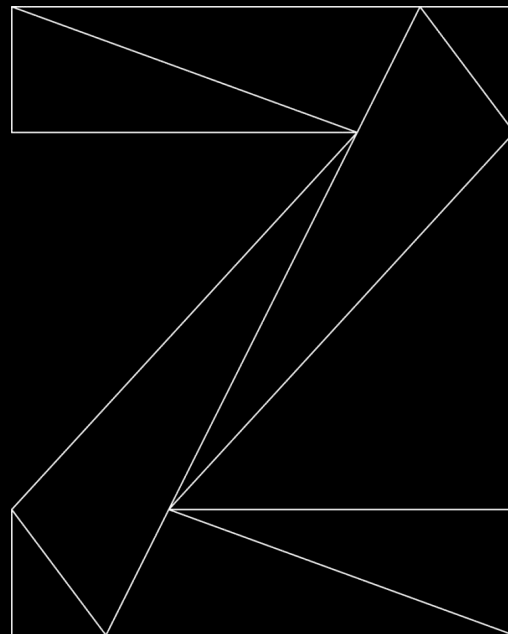
IBM brings
Pervasive Encryption
to the Cloud with
New System Design

Andreas Thomasch
Platform Leader & Manager
IBM Z & LinuxONE, DACH



Agenda

- 11:00 Opening & Strategy remarks**
Andreas Thomasch, Platform Leader & Manager
IBM Z & LinuxONE, DACH
- 11:15 Announcement News**
Bodo Hoppe, Distinguished Engineer
Hardware Verification, IBM Labor Böblingen
- 11:45 A deeper look at security@IBM Z**
Rita Pleus, Product Manager IBM Z & LinuxONE
Hardware + Operating Systems, DACH
- 11:55 Master the Mainframe experience**
Sebastian Wind, Student
Universität Leipzig
- 12:00 Q&A**



Trademarks

The following are trademarks of the International Business Machines Corporation in the United States and/or other countries.

BladeCenter*	FICON*	IBM*	LinuxONE	Storwize*	z13s	z/OS*
Db2*	Flash Systems	IBM (logo)*	LinuxONE Emperor II	System Storage*	z14	z/VM*
DFSMSdss	GDPS*	ibm.com	LinuxONE Rockhopper II	WebSphere*	zEnterprise*	z/VSE*
DFSMSHsm	HiperSockets	IBMZ*	Power Systems	z13*	zHyperLink	
ECKD	HyperSwap*	InfiniBand*	PR/SM			

* Registered trademarks of IBM Corporation

Adobe, the Adobe logo, PostScript, and the PostScript logo are either registered trademarks or trademarks of Adobe Systems Incorporated in the United States, and/or other countries.

IT Infrastructure Library is a Registered Trade Mark of AXELOS Limited.

ITIL is a Registered Trade Mark of AXELOS Limited.

Linear Tape-Open, LTO, the LTO Logo, Ultrium, and the Ultrium logo are trademarks of HP, IBM Corp. and Quantum in the U.S. and other countries.

Intel, Intel logo, Intel Inside, Intel Inside logo, Intel Centrino, Intel Centrino logo, Celeron, Intel Xeon, Intel SpeedStep, Itanium, and Pentium are trademarks or registered trademarks of Intel Corporation or its subsidiaries in the United States and other countries.

Linux is a registered trademark of Linus Torvalds in the United States, other countries, or both.

Microsoft, Windows, Windows NT, and the Windows logo are trademarks of Microsoft Corporation in the United States, other countries, or both.

Java and all Java-based trademarks and logos are trademarks or registered trademarks of Oracle and/or its affiliates.

Cell Broadband Engine is a trademark of Sony Computer Entertainment, Inc. in the United States, other countries, or both and is used under license therefrom.

UNIX is a registered trademark of The Open Group in the United States and other countries.

VMware, the VMware logo, VMware Cloud Foundation, VMware Cloud Foundation Service, VMware vCenter Server, and VMware vSphere are registered trademarks or trademarks of VMware, Inc. or its subsidiaries in the United States and/or other jurisdictions.

Other product and service names might be trademarks of IBM or other companies.

Notes:

Performance is in Internal Throughput Rate (ITR) ratio based on measurements and projections using standard IBM benchmarks in a controlled environment. The actual throughput that any user will experience will vary depending upon considerations such as the amount of multiprogramming in the user's job stream, the I/O configuration, the storage configuration, and the workload processed. Therefore, no assurance can be given that an individual user will achieve throughput improvements equivalent to the performance ratios stated here.

IBM hardware products are manufactured from new parts, or new and serviceable used parts. Regardless, our warranty terms apply.

All customer examples cited or described in this presentation are presented as illustrations of the manner in which some customers have used IBM products and the results they may have achieved. Actual environmental costs and performance characteristics will vary depending on individual customer configurations and conditions.

This publication was produced in the United States. IBM may not offer the products, services or features discussed in this document in other countries, and the information may be subject to change without notice. Consult your local IBM business contact for information on the product or services available in your area.

All statements regarding IBM's future direction and intent are subject to change or withdrawal without notice, and represent goals and objectives only.

Information about non-IBM products is obtained from the manufacturers of those products or their published announcements. IBM has not tested those products and cannot confirm the performance, compatibility, or any other claims related to non-IBM products. Questions on the capabilities of non-IBM products should be addressed to the suppliers of those products.

Prices subject to change without notice. Contact your IBM representative or Business Partner for the most current pricing in your geography.

This information provides only general descriptions of the types and portions of workloads that are eligible for execution on Specialty Engines (e.g. zIIPs, zAAPs, and IFLs) ("SEs"). IBM authorizes customers to use IBM SE only to execute the processing of Eligible Workloads of specific Programs expressly authorized by IBM as specified in the "Authorized Use Table for IBM Machines" provided at www.ibm.com/systems/support/machine_warranties/machine_code/aut.html ("AUT"). No other workload processing is authorized for execution on an SE. IBM offers SE at a lower price than General Processors/Central Processors because customers are authorized to use SEs only to process certain types and/or amounts of workloads as specified by IBM in the AUT.

From our Chairman's Letter of Ginni Rometty to our Annual Report 2017

(see <https://www.ibm.com/annualreport/2017/letter.html> for full letter):

(...) Our reinvented systems franchises generated strong growth.

Mainframes enjoyed a very strong fourth quarter, thanks to the launch of the new z14, the world's first system that can encrypt data pervasively without requiring changes to applications and with no downtime.

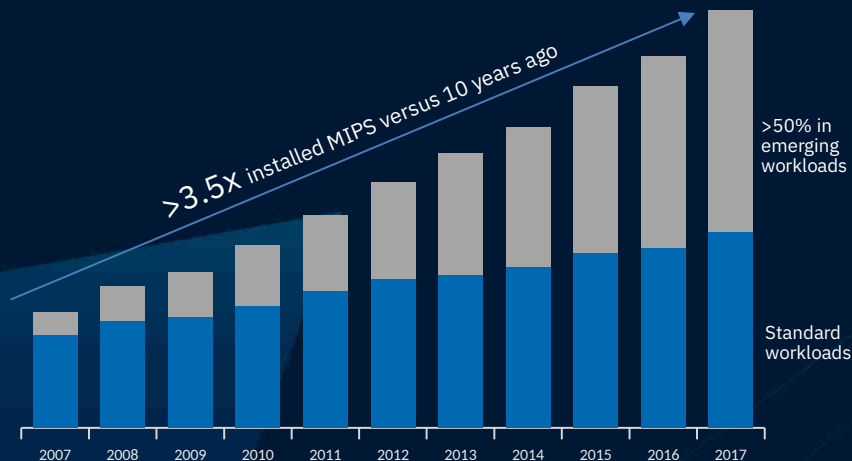
We expect this breakthrough will drive significant expansion of the mainframe's already broad market. (...)

Embargoed until April 10th

IBM Z Continues to evolve & grow with our clients and the market through multiple technology eras

Continuous Reinvention of Enduring Platforms for Business

Workload as measured by installed Million Instructions Per Second (MIPS)



IBM Z Value Drivers

- + Industry first pervasive encryption capabilities
- + Open and connected to public and private cloud environments
- + Optimized for machine learning and real time insights
- + Transparent and predictable container pricing for new workloads
- + Unmatched reliability, security, and availability

92

of top 100 banks in the world

10

of 10 largest insurers in the world

30B

Transactions processed per day

~\$7T

Annual credit card payments

>3.5x

installed MIPS versus 10yrs ago

>50%

of installed MIPS in emerging workloads

>50%

Strategic Imperatives revenue mix

Embargoed until April 10th

IBM Z: Designed for trusted digital experiences

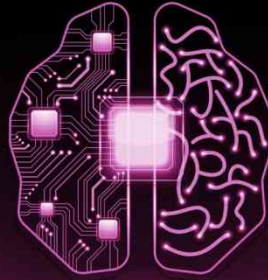
The world's premier system for enabling data as the new security perimeter

- Pervasive encryption
- No application changes
- Protect from internal and external threats



Designed for data serving in a cognitive world

- Speed, scale and reduced latency
- Efficiency for managing data
- Secure and flexible access to data



The best infrastructure to support an open and connected world

- 'From anywhere' mobile access
- Simplified sys admin of z/OS®
- Standardization for skills transfer



Embargoed until April 10th

Extending the IBM z14 Family



Built on the same
technology of IBM z14

Addressing new
markets

Standardization and
Simplicity

One strong platform
and family for the
future

Embargoed until April 10th

What is launching on April 10?

- IBM Z is launching a single-frame z14 model **ZR1** (industry standard 19" rack)
- LinuxONE is launching the **Rockhopper II**

Key dates:

- April 10 – Announcement
- 2Q (TBD) – General Availability



Early Support Program - Customer in DACH

- Contract Signed
- Customer Environment
 - zBC12 □ z14 ZR1
 - z/OS
 - z/VM
 - z/VSE
 - Linux on Z
 - KIDICAP NEO (HR application)
- Will become IBM reference customer



One of the leading IT
service providers for
the churches in
Germany

Embargoed until April 10th



IBM z14

Extending the IBM z14 Family

Breakthrough technologies

Designed for the Secure Cloud



Embargoed until April 10th

IBM **z14**
Model ZR1

IBM **LinuxONE**
Rockhopper II

Bodo Hoppe
Distinguished Engineer
IBM Z Development



Introducing the new IBM z14 Model ZR1 & IBM LinuxONE Rockhopper II

with key technologies engineered in the
Böblingen Development Lab



Designed and developed, using IBM Design Thinking

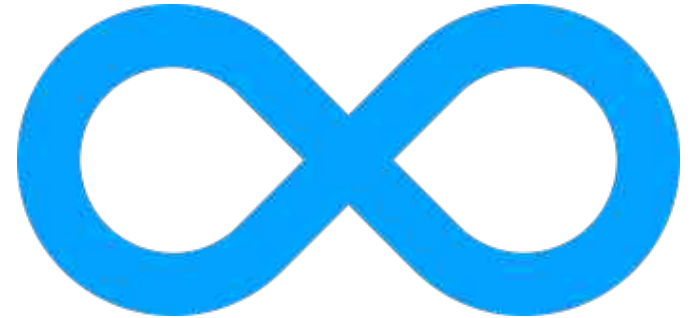
Co-created with stakeholders
and sponsor users from clients
of all sizes, applications users,
business partners and
geographies

Collaborated with more than 150
clients for IBM z14 and additional 80
clients for IBM ZR1 and IBM LinuxONE
Rockhopper II

Observe

Reflect

Make



New Cloud Ready: All in One

Platform Simplification

- Standardization across many components
 - including industry standard 19" single frame rack*
- 16U free space in frame
- Data Center in a Box
 - Low-latency connectivity (IBM zHyperlink Express)
- 40% less space

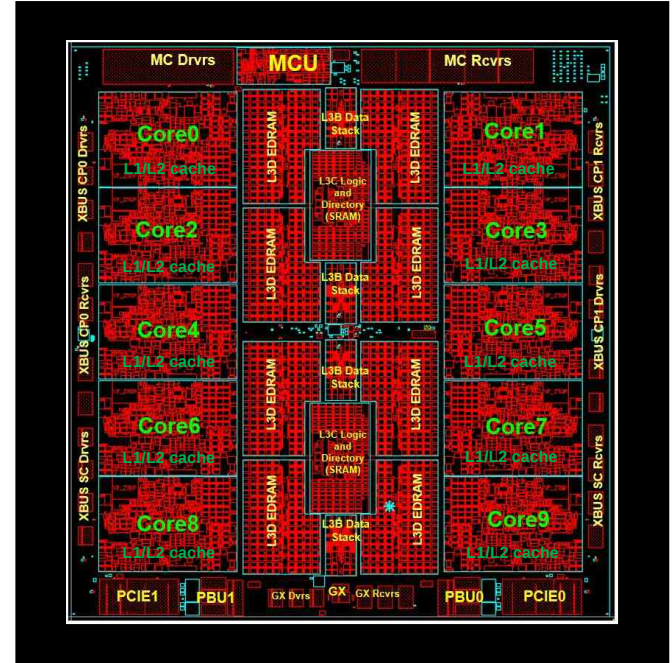
*Processor Board & Cards
developed in the Böblingen
Development Lab



IBM z14 Model ZR1 & IBM LinuxONE Rockhopper II

10-core processor chip

- Same chip technology as the z14 Models M01-M05
- Up to ten cores (PUs) per chip
- 4.5 GHz versus 5.2 GHz for the IBM z14 M01-M05
- Improved instructions per cycle (IPC) with microarchitecture enhancements



14nm SOI Technology
17 layers of metal
6.1 Billion Transistors
Chip Area
26.5 x 27.8 mm

IBM Secure Container*



Secure
Service
Container

Even Root Users and Sys Admins can not access or see data and software

Malware can not self install into the container

All Data is encrypted.
Keys are protected in memory



IBM Secure Service
Container
Appliance

Management UI / REST API

Solution / Application

Application Interfaces

Management Backend

Base Operating System

*Invented, owned and majorly developed in the IBM Böblingen development lab

New IBM Db2 Analytics Accelerator


Analytics acceleration on z14 Model ZR1 with the high quality of service of IBM Z. No need for an external server.

Uses IBM Secure Container Technology

Invented and developed in the IBM Böblingen Development Lab



What else is new in z14 Model ZR1 and IBM LinuxOne Rockhopper II?




Largest z14 Model ZR1 is expected to provide up to 13% more total z/OS and up to 60% more total Linux on Z capacity than the largest z13s

2x memory (8TB)
(compared to their predecessors)

IBM z14 Model ZR1
>850 Million fully encrypted transactions per day

Processor Units:
4, 12, 24 or 30 on max 6 CPs



IBM LinuxOne Rockhopper II
Docker-certified infrastructure tested with up to 330000 Docker containers

IBM z14 Model ZR1 & IBM LinuxONE Rockhopper II

Co-created with clients

Key innovations and technologies developed in
the Böblingen Development lab

Platforms provide trusted digital experiences in a
scalable, public, private, or hybrid cloud
infrastructure

Low cost enterprise entry models in a industry
standard form factor, an all-in-one solution that



New IBM z14 & Rockhopper II: A deeper look at security

10. April 2018 @ IBM Z Presse Event

Rita Pleus

Rita.Pleus@de.ibm.com

IBM Mainframe Product Manager Hardware + Operating Systems
zChampion, WW Lead Security

IBM Z

© 2018 IBM Corporation

you ^{IBM}

Trademarks

* Registered trademarks of IBM Corporation

CICS*	Guardium	IMS	z14
DB2*	IBM*	Qadr*	zSecure
DFSMS	IBM (logo)*	RACF*	z/OS*
DS8000*	IBM Z	z13*	z/VM*

The following are trademarks of the International Business Machines Corporation in the United States and/or other countries.

Adobe, the Adobe logo, PostScript, and the PostScript logo are either registered trademarks or trademarks of Adobe Systems Incorporated in the United States, and/or other countries.

IT Infrastructure Library is a Registered Trade Mark of AXELOS Limited.

ITIL is a Registered Trade Mark of AXELOS Limited.

Linear Tape-Open, LTO, the LTO Logo, Ultrium, and the Ultrium logo are trademarks of HP, IBM Corp. and Quantum in the U.S. and other countries.

Intel, Intel logo, Intel Inside, Intel Inside logo, Intel Centrino, Intel Centrino logo, Celeron, Intel Xeon, Intel SpeedStep, Itanium, and Pentium are trademarks or registered trademarks of Intel Corporation or its subsidiaries in the United States and other countries.

Linux is a registered trademark of Linus Torvalds in the United States, other countries, or both.

Microsoft, Windows, Windows NT, and the Windows logo are trademarks of Microsoft Corporation in the United States, other countries, or both.

Java and all Java-based trademarks and logos are trademarks or registered trademarks of Oracle and/or its affiliates.

Cell Broadband Engine is a trademark of Sony Computer Entertainment, Inc. in the United States, other countries, or both and is used under license therefrom.

UNIX is a registered trademark of The Open Group in the United States and other countries.

VMware, the VMware logo, VMware Cloud Foundation, VMware Cloud Foundation Service, VMware vCenter Server, and VMware vSphere are registered trademarks or trademarks of VMware, Inc. or its subsidiaries in the United States and/or other jurisdictions.

Other product and service names might be trademarks of IBM or other companies.

Notes:

Performance is in Internal Throughput Rate (ITR) ratio based on measurements and projections using standard IBM benchmarks in a controlled environment. The actual throughput that any user will experience will vary depending upon considerations such as the amount of multiprogramming in the user's job stream, the I/O configuration, the storage configuration, and the workload processed. Therefore, no assurance can be given that an individual user will achieve throughput improvements equivalent to the performance ratios stated here.

IBM hardware products are manufactured from new parts, or new and serviceable used parts. Regardless, our warranty terms apply.

All customer examples cited or described in this presentation are presented as illustrations of the manner in which some customers have used IBM products and the results they may have achieved. Actual environmental costs and performance characteristics will vary depending on individual customer configurations and conditions.

This publication was produced in the United States. IBM may not offer the products, services or features discussed in this document in other countries, and the information may be subject to change without notice. Consult your local IBM business contact for information on the product or services available in your area.

All statements regarding IBM's future direction and intent are subject to change or withdrawal without notice, and represent goals and objectives only.

Information about non-IBM products is obtained from the manufacturers of those products or their published announcements. IBM has not tested those products and cannot confirm the performance, compatibility, or any other claims related to non-IBM products. Questions on the capabilities of non-IBM products should be addressed to the suppliers of those products.

Prices subject to change without notice. Contact your IBM representative or Business Partner for the most current pricing in your geography.

This information provides only general descriptions of the types and portions of workloads that are eligible for execution on Specialty Engines (e.g. zIIPs, zAAPs, and IFLs) ("SEs"). IBM authorizes customers to use IBM SE only to execute the processing of Eligible Workloads of specific Programs expressly authorized by IBM as specified in the "Authorized Use Table for IBM Machines" provided at www.ibm.com/systems/support/machine_warranties/machine_code/aut.html ("AUT"). No other workload processing is authorized for execution on an SE. IBM offers SE at a lower price than General Processors/Central Processors because customers are authorized to use SEs only to process certain types and/or amounts of workloads as specified by IBM in the AUT.



Warum Datenschutz (und Verschlüsselung) ?

Regulations



European Union General
Data Protection Regulation
(GDPR) ab 25.Mai 2018

IT-Sicherheitsgesetz
(ITSiG)
seit 25.Juli 2015



Payment Card Industry Data
Security Standard (PCI-DSS)



PSD2-Richtlinie
seit 13.01.2018



Business

- Sicherheit als Differenzierungsmerkmal von Unternehmen
 - Freiwillig zum Zweck der Kundenwerbung/-vertrauen
 - Notwendig zur Erfüllung gesetzlicher Auflagen

Cyberkriminalität

„Cyber-Kriminalität, Cyber-Spionage gegenüber Staat und Wirtschaft und provozierte Ausfälle Kritischer Infrastrukturen sind eine ernstzunehmende Bedrohung unserer Gesellschaft im 21. Jahrhundert “
(Quelle BSI : Die Lage der IT-Sicherheit in Deutschland 2017)



Raising the Bar for Data Protection

From selective encryption to pervasive encryption

Encrypting only the data required to achieve compliance should be viewed as a minimum threshold, not a best practice.

Focus on eliminating barriers to encryption:

- Decouple encryption from data classification
- Prevent from extensive application changes
- Enable encryption of database indexes and/or key fields
- Reduce cost associated with processor overhead

In order to help organizations protect all of their digital assets



Pervasive

encryption

is the
new



Pervasive Encryption with IBM z Systems

Enabled through full-stack platform integration

Integrated Crypto Hardware



Hardware accelerated encryption on every core – CPACF performance improvements of up to 7x
Next Gen Crypto Express6S – up to 2x faster than prior generation

Data at Rest



Broadly protect Linux® file systems and z/OS data sets using policy controlled encryption that is transparent to applications and databases

Clustering



Protect z/OS Coupling Facility data end-to-end, using encryption that's transparent to applications

Network



Protect network traffic using standards based encryption from end to end, including encryption readiness technology² to ensure that z/OS systems meet approved encryption criteria

Secure Service Container



Secure deployment of software appliances including tamper protection during installation and runtime, restricted administrator access, and encryption of data and code in-flight and at-rest

Key Management

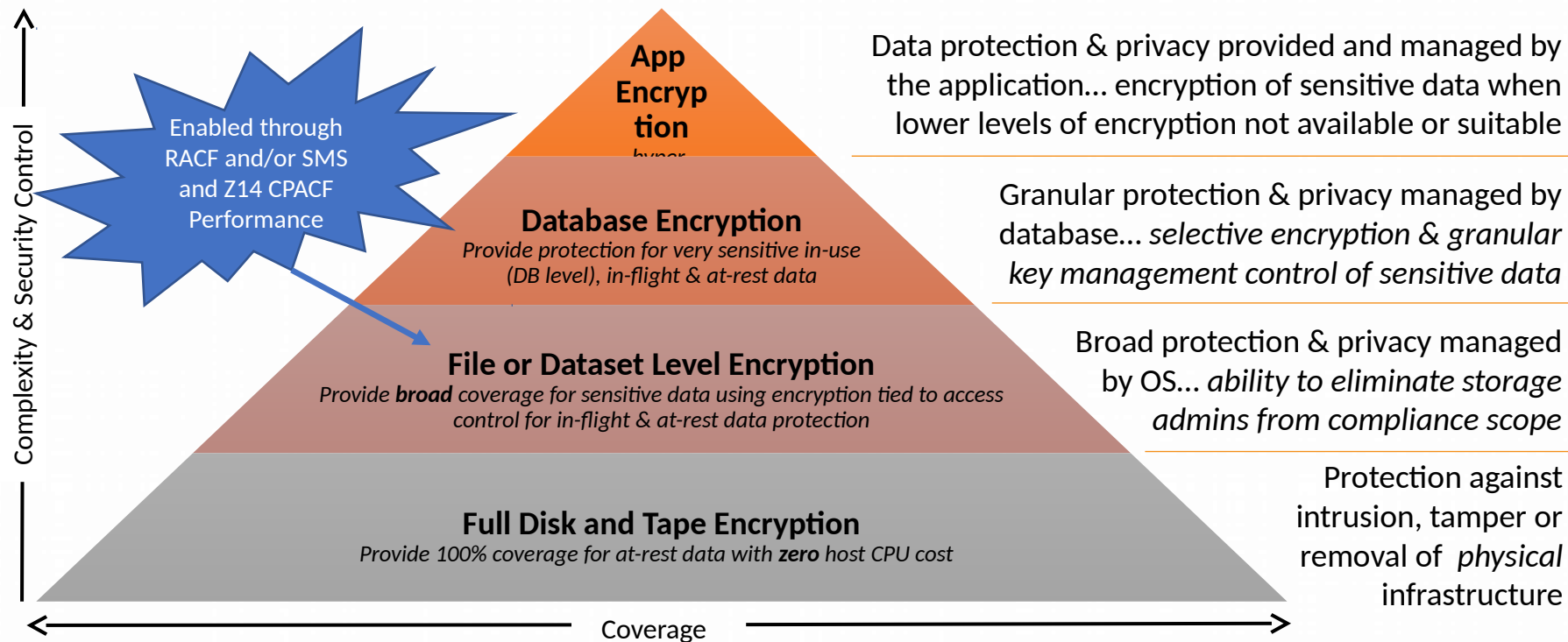


The IBM Enterprise Key Management Foundation (EKMF) provides real-time, centralized secure management of keys and certificates with a variety of cryptographic devices and key stores.



System z : Multiple Layers of Encryption

Robust data protection



z/OS 2.2 & 2.3

- encrypted data
- unencrypted data



IBM Hyper Protect Services

How do IBM Hyper Protect Services keep your data safe?

Data-at-rest encryption

Encrypt all your code and data stored in the IBM Cloud protected by the Z/LinuxONE hardware and firmware. No insiders have access to the data.

Data-in-transit protection

Protect all data between Hyper Protect services with certificates stored in protected storage and memory thanks to the Z/LinuxONE Secure Service Containers technology.

Data-in-memory protection

Keep data safe while in memory with Secure Service Container on Z/LinuxONE.

Features services

IBM Cloud Hyper Protect Crypto Services

Infuse the highest level of security with data encryption and key management capabilities into your apps.

→ [Learn more](#)

IBM Cloud Hyper Protect Containers

Deploy Kubernetes workloads on a highly secure platform built for confidential computing.

→ [Learn more](#)

IBM Cloud Hyper Protect DBaaS

Retain your data in a fully encrypted client database without the need for specialized skills.

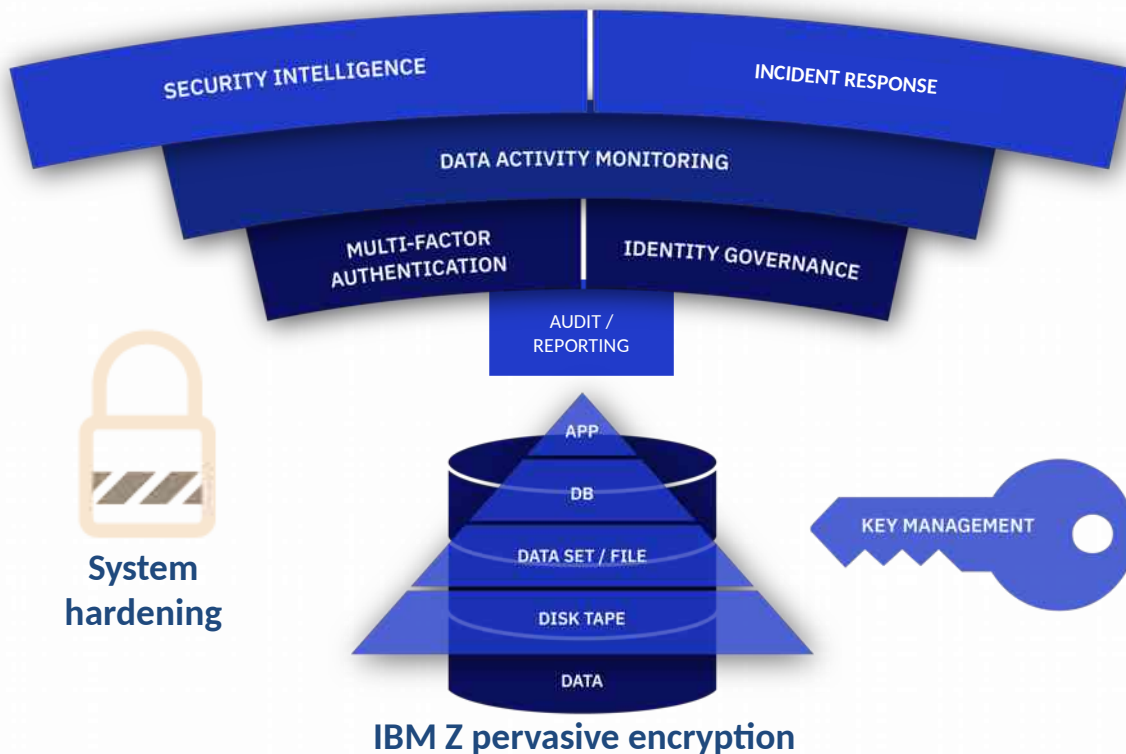
→ [Learn more](#)

<https://www.ibm.com/cloud/hyper-protect-services>



Protecting data at the core of the enterprise

Encryption is the solid foundation of a layered cybersecurity strategy



Traditional workloads and APIs:

- DB2
- IMS
- CICS / VSAM
- MQ

Relevant IBM Security Solutions:

- IBM Security zSecure Suite
- IBM Security QRadar
- IBM Security Guardium Family
- IBM Multi-factor Authentication
- IBM Security Identity Governance
- Enterprise Key Management

More information

IBM z Systems Security

<http://www.ibm.com/systems/z/solutions/enterprise-security.html>

Redbooks

<http://www.redbooks.ibm.com/>

SG24-8410-00 Getting Started with z/OS Data Set Encryption

Crypto Competency Center

<http://www.ibm.com/security/cccc/>

Announcement Info

www.ibm.com/systems/zsolutions

Demo Pervasive Encryption

<https://www.youtube.com/watch?v=EP488nLdGts>



Questions about this content?

Master the Mainframe contest 2017, winner - Europe region



1st Place Europe Region:

Sebastian Wind, University of Leipzig, Germany

>> among the top three worldwide !

Sebastian Wind, MtM 2017 video: <https://youtu.be/PEWRV0HMoZY>

>> around 12000 MtM participants ww, from 122 countries.

▪ MtM - Europe winner celebration at 2018 IBM Systems TU, London, 14th May 2018

2018
IBM Systems
Technical University

IBM Z - IBM Storage for Z



14. May 2018,
London